

VIJAYA[®] ECO FOLD

**FOLDER GLUER FOR STRAIGHT LINE AND
CRASH-LOCK BOTTOM CARTONS**



SALIENT FEATURES

- Variable speed with clutch in Feeder
- 130° & 180° Pre-Fold
- 3 Bottom Track & 5 Top Tracks
- Lockable top track holder handles
- High speed lock hooks
- Individual speed variable final folding belts
- A&B pin separate glue tank(Fully stainless steel)
- Gum flap Grinder
- Batch counter with pneumatic kicker
- VFD, PLC SYNC, HMI & push button operated panel
- Mechanical pressured pressing station (extended if required)
- Separate motor for Pressing station
- Compactable for duplex, met-pet, triply cartons
- CNC machined & powder coated solid frame
- Anti vibration padded legs
- All hardchrome alloy shafts
- Complete hardened bolts
- 3 Nozzle electronic gluing system with touch screen control

OPTIONAL FEATURES

- Plasma curing system
- Quality assurance system
- Braille embossing system
- Clapping device for corrugated cartons
- Cache cover attachment
- Flip top carton attachment
- Double wall carton attachment
- Tube light carton attachment



FEEDER

- Variable speed driven: The feeding unit with variable drives designed to allow appropriate space between the cartons
- Electro magnetic feeder clutch system is to stop the feeder unit while the entire machine is running.



PRE -FOLDING OR CRASH LOCK BOTTOM UNIT

- The first and third crease can be pre-folded at 180° & 135° respectively.
- For folding of all lock bottom flaps this unit is designed in three transport tracks in 2 units, so that the carton remains under pressure of all three tracks at the time of folding of flaps for lock bottom & four/six corner boxes.
- This prevents shifting or non alignment of cartons resulting to low wastage and increases production speed.
- Self adjustable transport tracks for duplex and E-flute cartons.



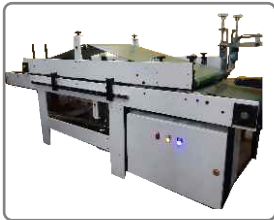
FINAL FOLDING UNIT WITH SPEED VARIATOR

- The folding of second and fourth crease after gluing process.
- The highly performing design of folding belts & runner which plays a vital role in final finishing at a high speed.
- Variable speed of final folding belts
- The side lay belt speed can be varied by speed variator knob.
- Optional collapsible centre bottom track.



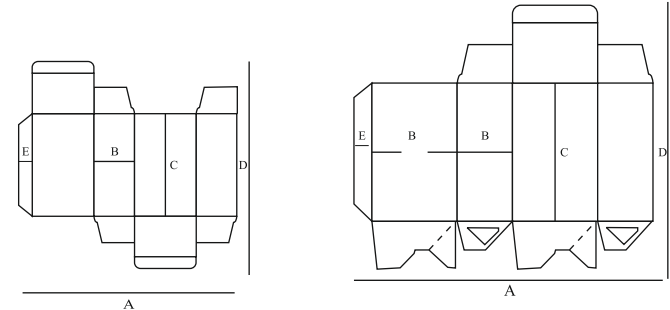
TRANSFER SECTION

- It allows the carton to be transferred to pressure unit in regular, constant flow at any production speed.
- Equipped with push button control for the operating of the machine.
- Batch counter equipped with electronic sensor and pneumatic kicker.
- Optional Straightening device used to correct the registration of outer cartons.
- Optional clapping device used for corrugated cartons.



PRESSURE DELIVERY

- 3.7mtr length with 2.5 mtr length effective pressing station
- Separate motor for pressing station. The independent geared motor helps in increasing or decreasing the speed of unit. So that the different size (Duplex or Triply) of cartons comes between the pressure belts smoothly
- The finished carton comes under a pressure rollers & get cured.



Technical Specification of Machine				Technical Specification for STRAIGHT LINE CARTONS							Technical Specification for LOCK BOTTOM CARTONS							
Models	Power Required	Dimension	Max. Speed	Models	A min.	A max.	B Min.	B Max.	C min	D Max.	E min	Models	A min.	A max.	B Min.	C min	D Max.	E min
VIJAYA 65	8 KW	1.2mtr X 8.6mtr	200 mtr/m	VIJAYA 65	60mm	650mm	15mm	250mm	55mm	450mm	11mm	VIJAYA 65	140mm	650mm	32mm	130mm	450mm	11mm
VIJAYA 80	10 KW	1.4mtr X 9mtr	200 mtr/m	VIJAYA 80	110 mm	800mm	25mm	300mm	80mm	550mm	12mm	VIJAYA 80	140mm	800mm	32mm	130mm	550mm	12mm
VIJAYA 102	12 KW	1.6mtr X 9.5mtr	200 mtr/m	VIJAYA 102	140mm	1020mm	30mm	400mm	120mm	700mm	12mm	VIJAYA 102	160mm	1020mm	50mm	150mm	700mm	12mm

Note : Due to constant developments/upgradation, any information in this brochure is subject to change without notice